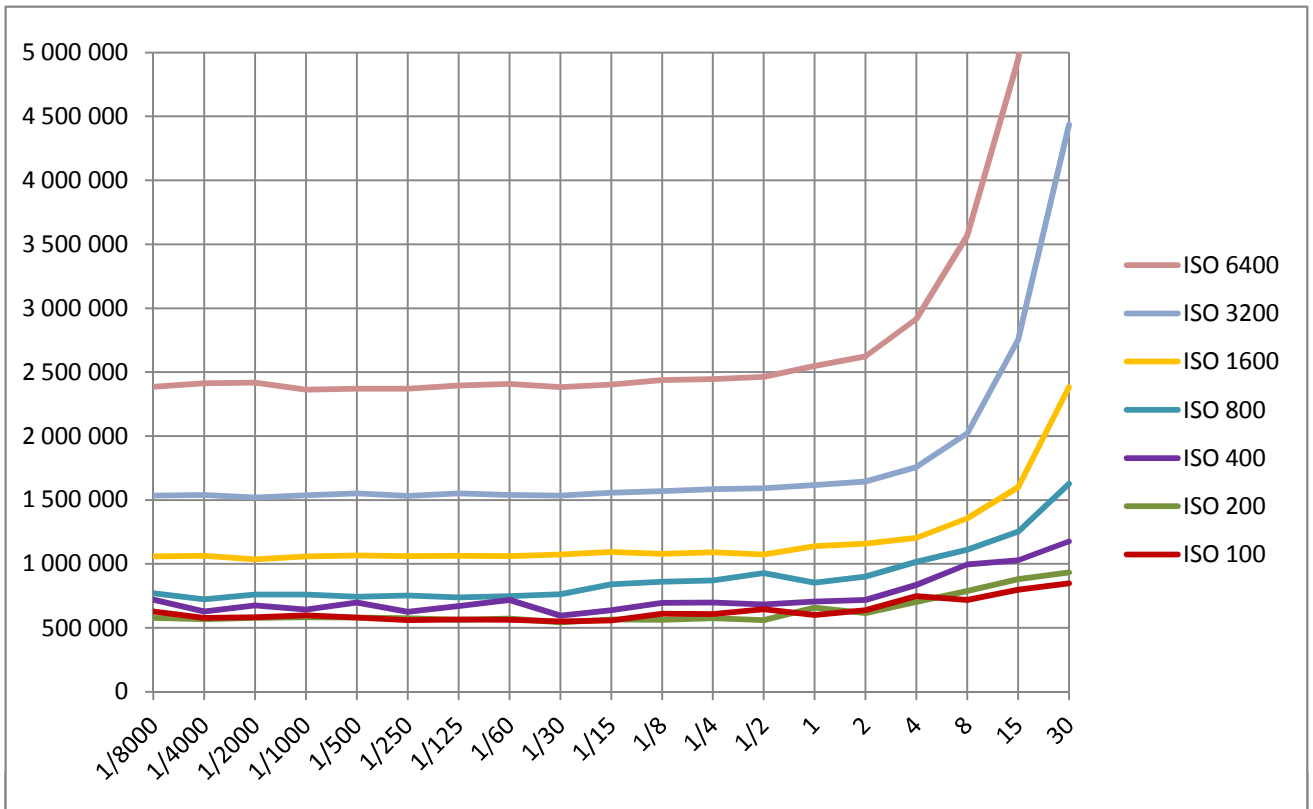


File size as a measure of picture noise in EOS 5D Mark II

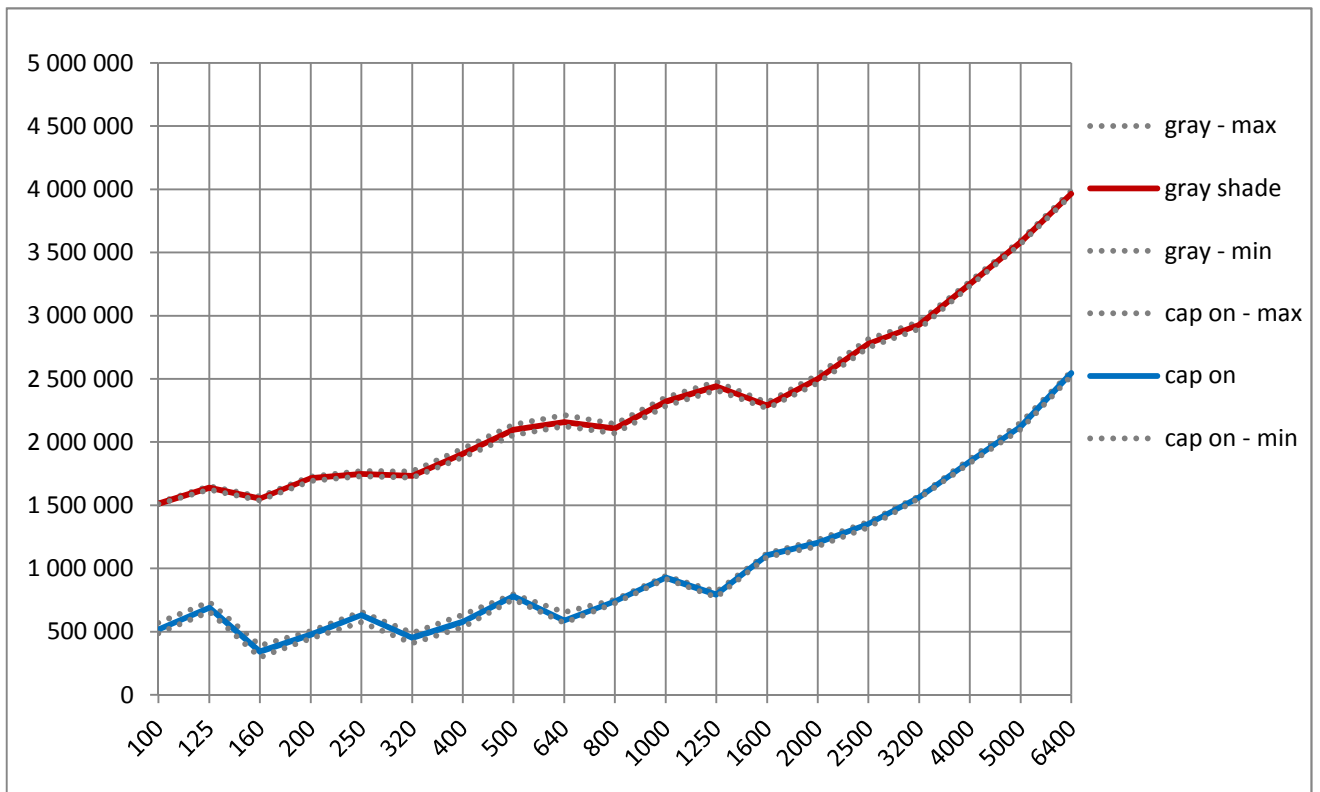
as a function of exposure time
lens cap on



based on single shots

File size as a measure of picture noise in EOS 5D Mark II

as a function of ISO speed



based on average value of 10 shots

File size as a measure of picture noise in EOS 5D Mark II

as a function of ISO speed

gray shade

ISO	exposure	file size average	min.	max.	difference max-min	difference /average	standard deviation
100	1/100	1 513 233	1 508 958	1 519 749	10 791	0,007	2 756
125	1/125	1 638 907	1 623 193	1 652 051	28 859	0,018	7 281
160	1/160	1 553 423	1 537 436	1 566 966	29 530	0,019	8 113
200	1/200	1 715 560	1 692 351	1 728 263	35 913	0,021	11 234
250	1/250	1 747 631	1 731 117	1 770 541	39 424	0,023	12 603
320	1/320	1 732 722	1 717 887	1 766 806	48 919	0,028	13 101
400	1/400	1 907 912	1 879 121	1 947 154	68 033	0,036	20 800
500	1/500	2 096 912	2 054 777	2 137 263	82 486	0,039	31 385
640	1/640	2 159 098	2 125 673	2 213 775	88 102	0,041	31 784
800	1/800	2 107 357	2 070 448	2 142 603	72 155	0,034	22 090
1000	1/1000	2 319 726	2 285 657	2 352 137	66 481	0,029	24 259
1250	1/1250	2 440 836	2 410 102	2 477 434	67 332	0,028	21 548
1600	1/1600	2 289 567	2 267 003	2 312 532	45 529	0,020	14 794
2000	1/2000	2 499 619	2 466 571	2 533 360	66 788	0,027	17 681
2500	1/2500	2 778 903	2 747 604	2 814 416	66 812	0,024	22 976
3200	1/3200	2 927 316	2 895 908	2 950 881	54 973	0,019	18 556
4000	1/4000	3 250 177	3 233 533	3 270 361	36 828	0,011	10 380
5000	1/5000	3 580 489	3 569 541	3 596 635	27 095	0,008	6 110
6400	1/6400	3 964 358	3 954 203	3 987 106	32 903	0,008	11 137

based on average value of 10 shots

aperture value F 4.0

lens cap on

ISO	exposure	file size average	min.	max.	difference max-min	difference /average	standard deviation
100	1/100	516 055	486 760	570 242	83 482	0,162	18 911
125	1/100	689 972	659 281	734 129	74 848	0,108	18 352
160	1/100	341 529	297 320	390 373	93 053	0,272	14 373
200	1/100	475 494	446 696	504 024	57 329	0,121	17 721
250	1/100	631 265	574 853	656 925	82 072	0,130	19 869
320	1/100	451 657	406 503	488 842	82 340	0,182	30 755
400	1/100	576 956	535 559	634 141	98 583	0,171	23 914
500	1/100	779 545	755 326	796 338	41 012	0,053	12 611
640	1/100	588 618	569 858	652 808	82 950	0,141	13 146
800	1/100	740 454	724 430	752 022	27 592	0,037	6 266
1000	1/100	928 056	916 002	939 316	23 315	0,025	7 430
1250	1/100	792 033	773 130	815 414	42 284	0,053	8 610
1600	1/100	1 105 042	1 090 915	1 120 573	29 658	0,027	8 493
2000	1/100	1 203 343	1 175 372	1 226 843	51 471	0,043	11 384
2500	1/100	1 352 733	1 323 883	1 367 195	43 312	0,032	8 607
3200	1/100	1 562 388	1 554 346	1 572 864	18 518	0,012	5 088
4000	1/100	1 846 268	1 833 879	1 863 434	29 555	0,016	5 684
5000	1/100	2 123 202	2 099 860	2 153 537	53 677	0,025	12 273
6400	1/100	2 544 527	2 521 508	2 558 591	37 084	0,015	9 855

based on average value of 10 shots

aperture value F 22.0

File size as a measure of picture noise in EOS 5D Mark II

as a function of exposure time

lens cap on

exposure	ISO100	ISO200	ISO400	ISO800	ISO1600	ISO3200	ISO6400
1/8000	626 817	578 214	720 463	771 414	1 059 300	1 532 956	2 386 144
1/4000	577 344	567 800	628 557	722 165	1 063 383	1 538 562	2 411 864
1/2000	583 094	577 732	674 263	761 613	1 036 398	1 519 259	2 417 338
1/1000	598 822	582 580	644 022	759 483	1 059 279	1 536 903	2 362 621
1/500	579 708	579 858	698 023	743 602	1 065 588	1 551 272	2 369 130
1/250	560 049	574 779	626 013	752 857	1 061 364	1 532 137	2 370 463
1/125	564 236	562 516	670 856	738 869	1 063 083	1 552 043	2 395 454
1/60	562 599	572 286	718 599	748 453	1 059 812	1 540 171	2 407 257
1/30	549 811	542 830	595 720	764 187	1 074 006	1 533 310	2 383 401
1/15	558 405	566 098	637 565	841 828	1 093 236	1 556 117	2 403 341
1/8	609 809	562 282	695 938	860 156	1 077 610	1 568 824	2 438 985
1/4	608 860	576 085	698 921	869 419	1 090 564	1 583 203	2 445 346
1/2	645 818	561 405	683 615	928 110	1 072 221	1 591 410	2 463 939
1	600 129	658 934	704 156	854 061	1 139 493	1 616 424	2 548 777
2	638 066	615 623	718 375	899 910	1 158 728	1 644 032	2 624 080
4	747 507	703 455	835 793	1 015 615	1 203 004	1 756 894	2 916 098
8	717 071	789 220	995 192	1 110 916	1 357 298	2 019 882	3 566 635
15	798 665	880 248	1 027 594	1 251 932	1 599 560	2 754 182	4 943 474
30	848 086	932 613	1 176 129	1 626 370	2 382 484	4 436 098	7 481 263

based on single shots

aperture value F 22.0

image sensor size		
x	5 616	pixel
y	3 744	pixel
	21,0	Mpx

NOTE:

All of the data have been normalized to 10 Mpx,
in order to simplify comparison with other cameras.